



PTT

Torque and Angle Analyzer

The new PTT is the next generation of Mountz hand-held torque analyzer. It offers "EZ-Plug & Play" with instant auto recognition with Mountz transducers. The PTT offers tool testing, graphing capabilities and a graphical menu for easy navigation.

PTT - Item # 072999
List Price \$1,795.00
Code H



Supplied with NIST-Traceable
 Certification of Calibration

- System Accuracy +/- 0.5% of reading from 20% to 100% of full scale.
 System Accuracy +/- 1% of reading from 10% to 20% of full scale.
- Recommended for all hand screwdrivers, wrenches or power tools.
- Provides "EZ-Plug & Play" with Mountz Transducers. Features "ARCII" technology, an instant auto-recognition system of the transducer connected to the PTT.
- Selection of six operating modes: (Track, Peak, First Peak, Audit, Torque + Angle, and Tool Test).
- Seven units of torque measurements: (ozf.in, lbf.in, lbf.ft, cN.m, N.m, kgf.m, kgf.cm).
- Features built-in Tool Tests operation.
- Includes three PC Windows based software programs:
 - PTT Interface Program** - for sensor calibrations, meter calibration and tool tests.
 - PTT Bootloader** - for updating the PTT operating systems.
 - Mountz Statistics Calculator** - for SPC, CP & CPK calculations.
- "Flash" memory allows upgrades to be done by the user in the field & internet through the USB port.
- Five low-pass filter selections (3000, 2000, 1500, 500 and 200 Hz).
- Six-digit display and easy to use menu structure.
- Real Time Clock for time stamping of readings.
- USB interface to download readings to PC.
- High Capacity Li-Ion Batteries for long life (30 hrs with standard transducers and 16 hrs with brushless rotary).
- Can connect to most mv/v transducers and can store calibration data for up to 50 non-smart torque sensors.
- The 5VDC capability allows unit to be used with a Brushless Rotary Transducer for testing pulse tools and high RPM tools.
- Torque and Angle readings are displayed simultaneously and supports up to 8000 RPM.
- Stores a total of 2500 data points.
- Real time graph of torque vs. time using associated PC Windows software.
- Features a Buzzer and Go / No Go LEDs that illuminate when high or low setting is achieved.
- Display Accuracy is better than +/- 0.0625 of reading.

P r o d u c t



B u l l e t i n

May 2006

Page 2 of 2



Cable Chart

| Transducer | Cable Item # | List Price | Code |
|------------|--------------|------------|------|
| RTSX-A | 072000 | \$160.00 | D |
| BLRTSX | 072001 | \$160.00 | D |
| BMX | 072002 | \$120.00 | D |
| SDX | 072004 | \$120.00 | D |
| RTSX | 072005 | \$120.00 | D |
| ETX | 072006 | \$120.00 | D |



* Contact Customer Service for connecting a SMX to the PTT

Standard Accessories included with PTT:

Universal Charger (100 - 240 VAC)
USB Cable
Software - PTT Interface Program
Software - PTT Bootloader
Software - Mountz Statics Calculator
Protective Cover

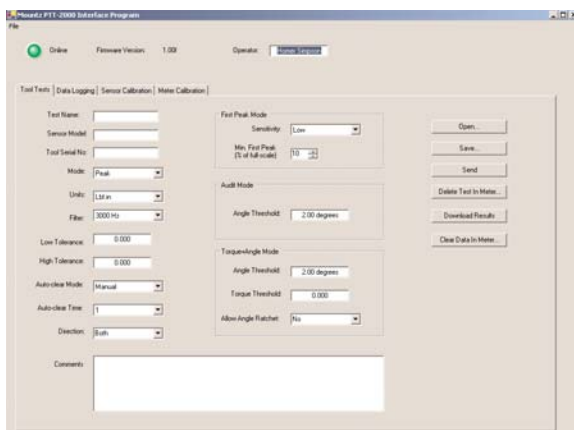
Accessories

| Description | Item # | List Price | Code |
|-------------------------|--------|------------|------|
| Charger (100 - 240 VAC) | 770300 | \$55.00 | C |
| USB Cable | 770319 | \$6.35 | C |
| Battery Pack | 072506 | \$100.00 | C |



Note!

Since a tester cannot always duplicate actual joint characteristic, the torque reading displayed on the PTT may vary from the actual torque that a tool will apply to a joint. When critical assemblies are involved, the torque output of the power tool being used should be verified on the actual assembly using a calibrated measuring torque tool.



Tool Tests & Graphing

The PTT allows you to set up and create tool tests and save the readings so you can export the data to a PC for documentation. It's the ideal solution for organizing and storing test data for ISO and SPC documentation.

The ability to graph a dynamic rundown allows joint analysis. Great resource to evaluate, create or confirm a torque specification or tool being used in production.

The "Mountz Statics Calculator" allows operators to perform basic SPC, CP & CPK calculations.

v 1.0